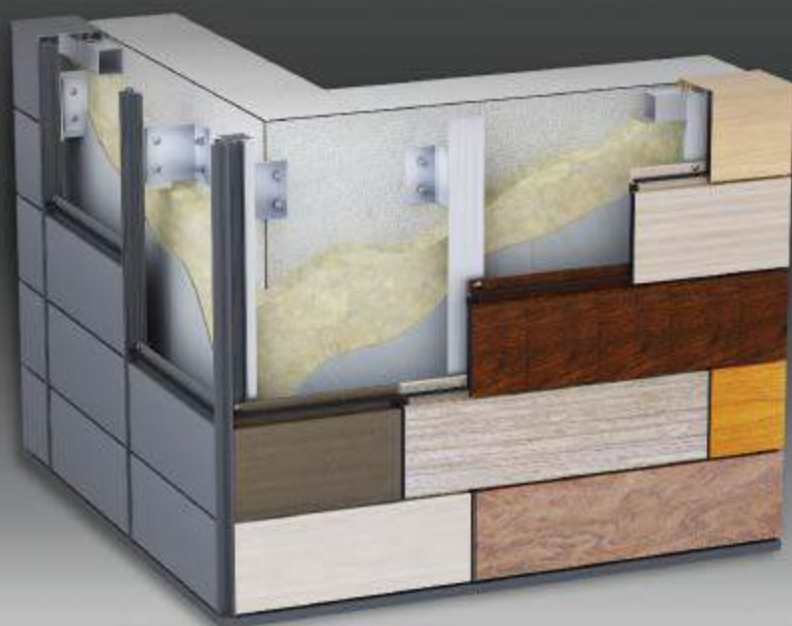




COTTAL

Aluminium Cladding System



KURTOĞLU
ALUMINIUM

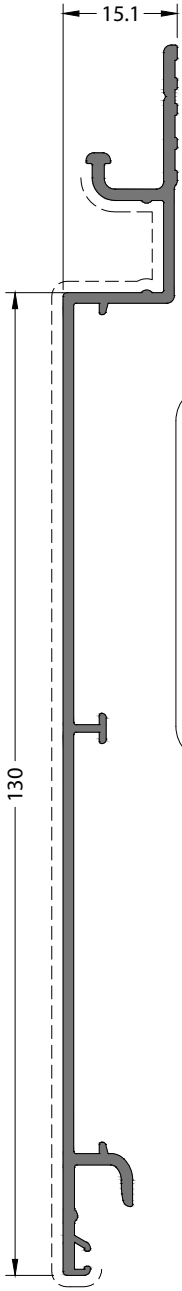


Aluminium Cladding System

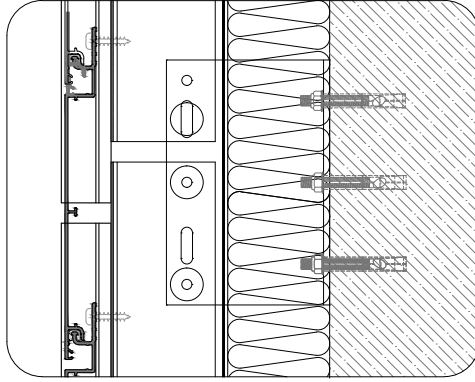
COTTAL

PROFILES / PROFILLER

PROFILES / PROFÍLLER



Application Details / Uygulama Detayı

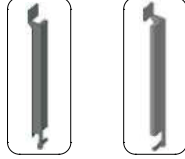


CODE / KOD
29-0130-14

THEORETICAL WEIGHT kg/m
TEORİK AĞIRLIK kg/m
0.827

FOR UNIQUE APPLICATION
ÖZGÜN UYGULAMA İÇİN

EM29-130L EPDM (Left / Sol) EM29-130R EPDM (Right / Sağ)

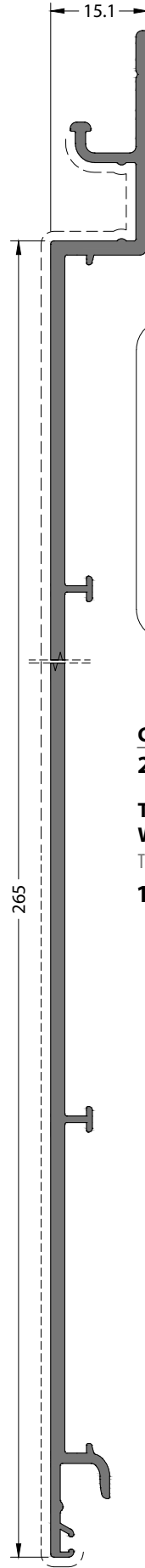


EPDM GASKET / EPDM FİTİL

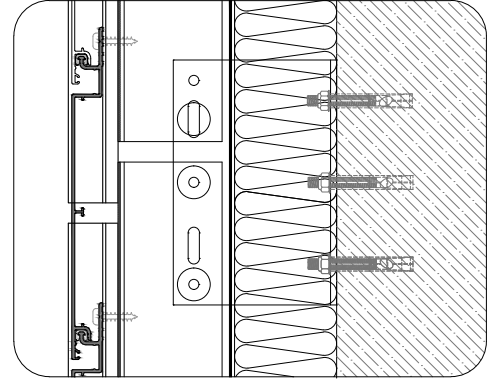


EM29-01

Weight Kg/m Teorik Ağırlık	In One Package Paket Miktarı
0.025	600 m



Application Details / Uygulama Detayı

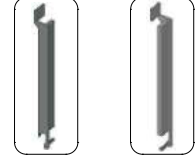


CODE / KOD
29-0265-22

THEORETICAL WEIGHT kg/m
TEORİK AĞIRLIK kg/m
1.928

FOR UNIQUE APPLICATION
ÖZGÜN UYGULAMA İÇİN

EM29-265L EPDM (Left / Sol) EM29-265R EPDM (Right / Sağ)



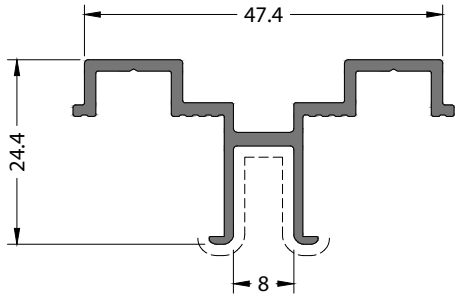
EPDM GASKET / EPDM FİTİL



EM29-01

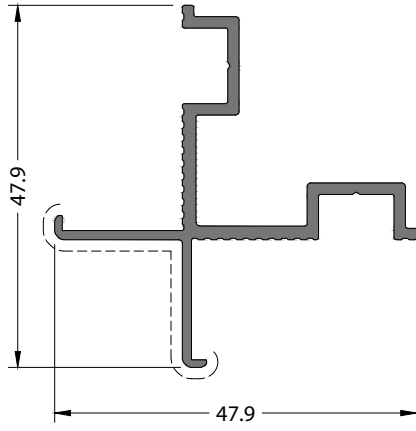
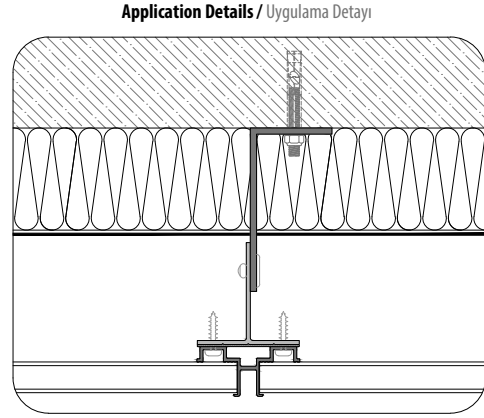
Weight Kg/m Teorik Ağırlık	In One Package Paket Miktarı
0.025	600 m

PROFILES / PROFİLLER



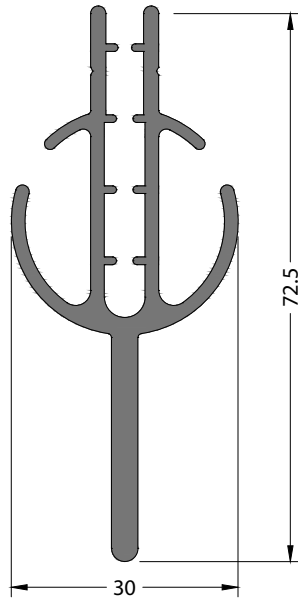
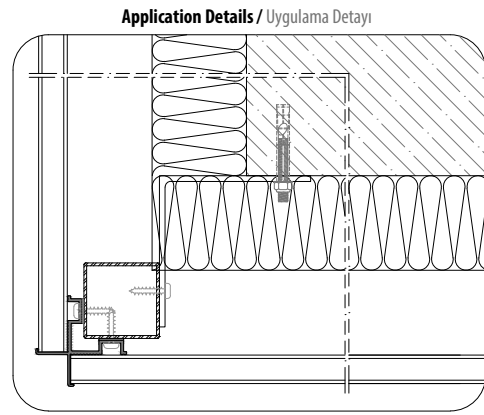
CODE / KOD
29-1001-00

**THEORETICAL
WEIGHT kg/m**
TEORİK AĞIRLIK kg/m
0.431



CODE / KOD
29-2001-00

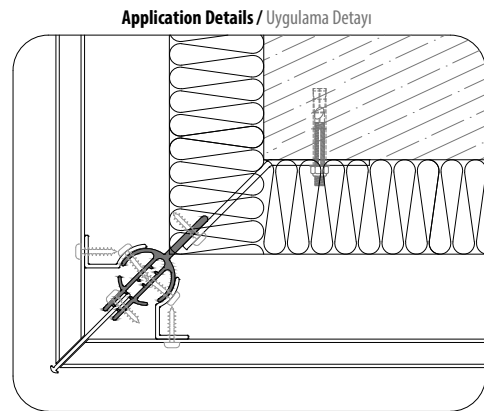
**THEORETICAL
WEIGHT kg/m**
TEORİK AĞIRLIK kg/m
0.473



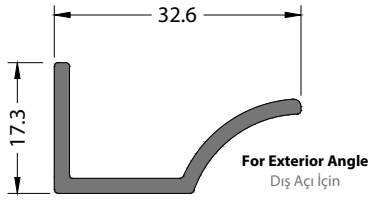
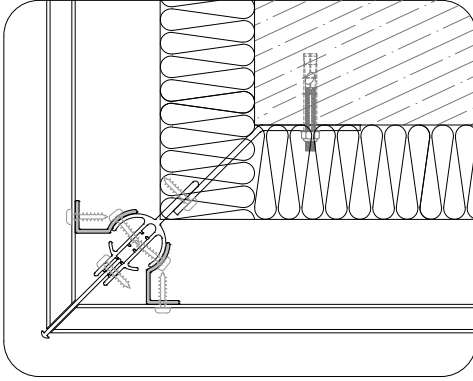
Mill Finish / Pres
No visible surface. / Görünen yüzeyi yoktur.

CODE / KOD
29-2011-00

**THEORETICAL
WEIGHT kg/m**
TEORİK AĞIRLIK kg/m
1.074



Application Details / Uygulama Detayı

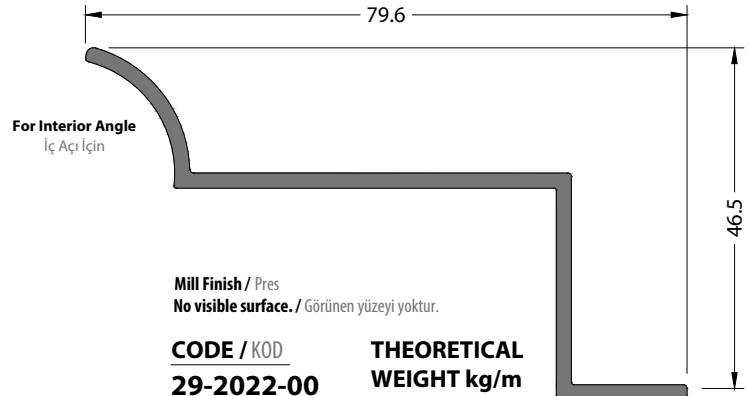
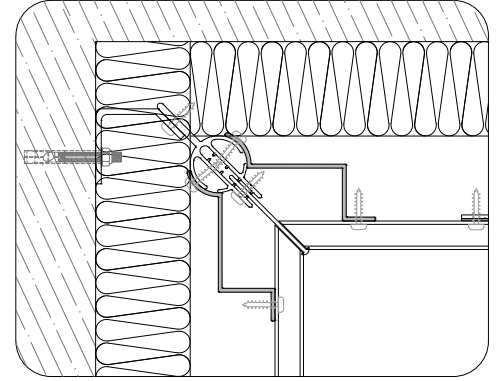


Mill Finish / Pres
No visible surface. / Görünen yüzeyi yoktur.

CODE / KOD
29-2021-00

THEORETICAL
WEIGHT kg/m
TEORİK AĞIRLIK kg/m
0.282

Application Details / Uygulama Detayı

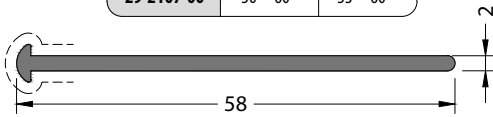


Mill Finish / Pres
No visible surface. / Görünen yüzeyi yoktur.

CODE / KOD
29-2022-00

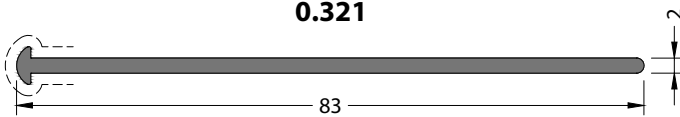
THEORETICAL
WEIGHT kg/m
TEORİK AĞIRLIK kg/m
0.635

PROFILE CODE PROFİL KOD	INTERIOR ANGLE İÇ AÇI	EXTERIOR ANGLE DIŞ AÇI
29-2058-00	85° - 180°	85° - 180°
29-2083-00	60° - 85°	60° - 85°
29-2107-00	50° - 60°	53° - 60°



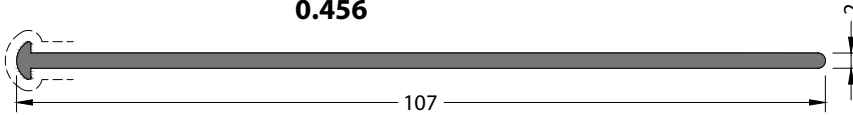
CODE / KOD
29-2058-00

THEORETICAL
WEIGHT kg/m
TEORİK AĞIRLIK kg/m
0.321



CODE / KOD
29-2083-00

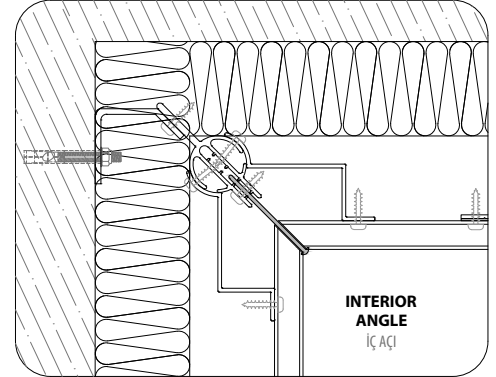
THEORETICAL
WEIGHT kg/m
TEORİK AĞIRLIK kg/m
0.456



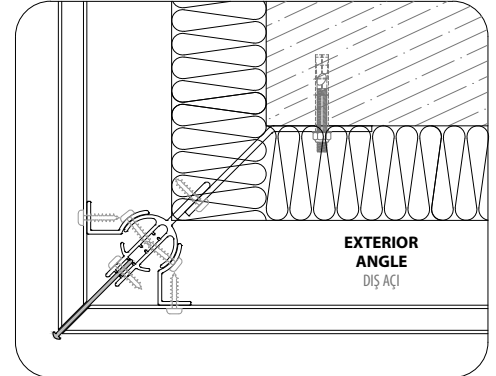
CODE / KOD
29-2107-00

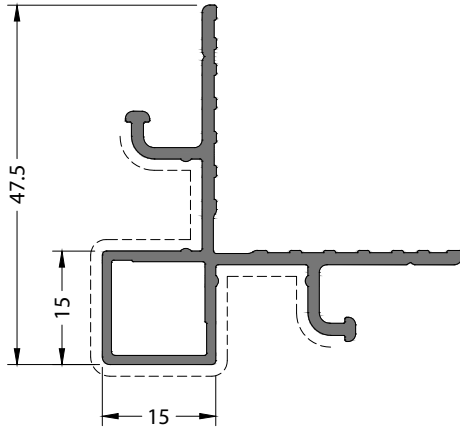
THEORETICAL
WEIGHT kg/m
TEORİK AĞIRLIK kg/m
0.586

Application Details / Uygulama Detayı



Application Details / Uygulama Detayı

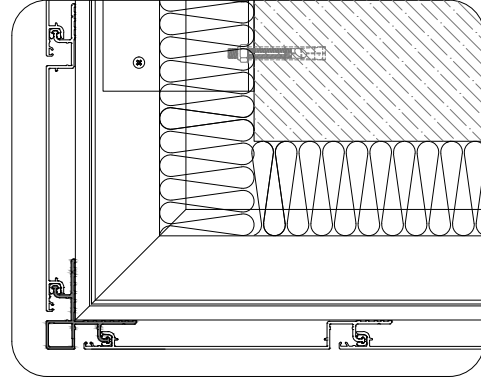




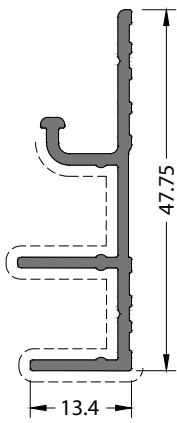
CODE / KOD
29-3001-00

THEORETICAL WEIGHT kg/m
TEORİK AĞIRLIK kg/m
0.606

Application Details / Uygulama Detayı

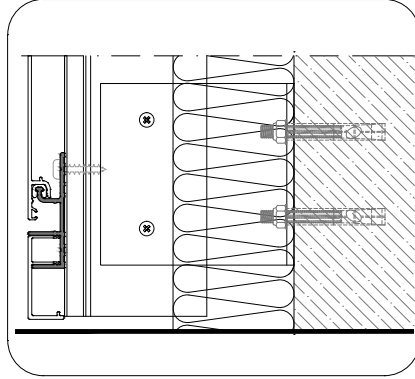


Application Details / Uygulama Detayı

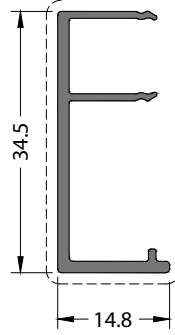


CODE / KOD
29-3002-00

THEORETICAL WEIGHT kg/m
TEORİK AĞIRLIK kg/m
0.359

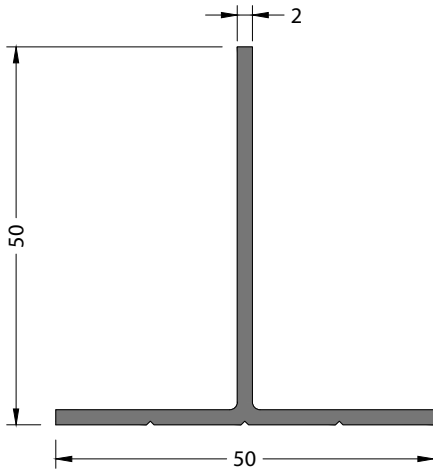
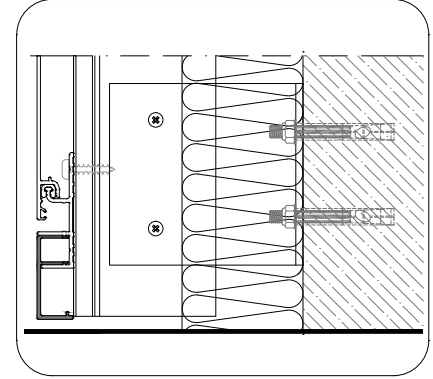


Application Details / Uygulama Detayı



CODE / KOD
29-4001-00

THEORETICAL WEIGHT kg/m
TEORİK AĞIRLIK kg/m
0.252

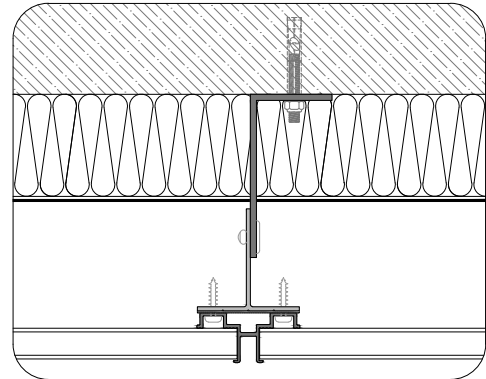


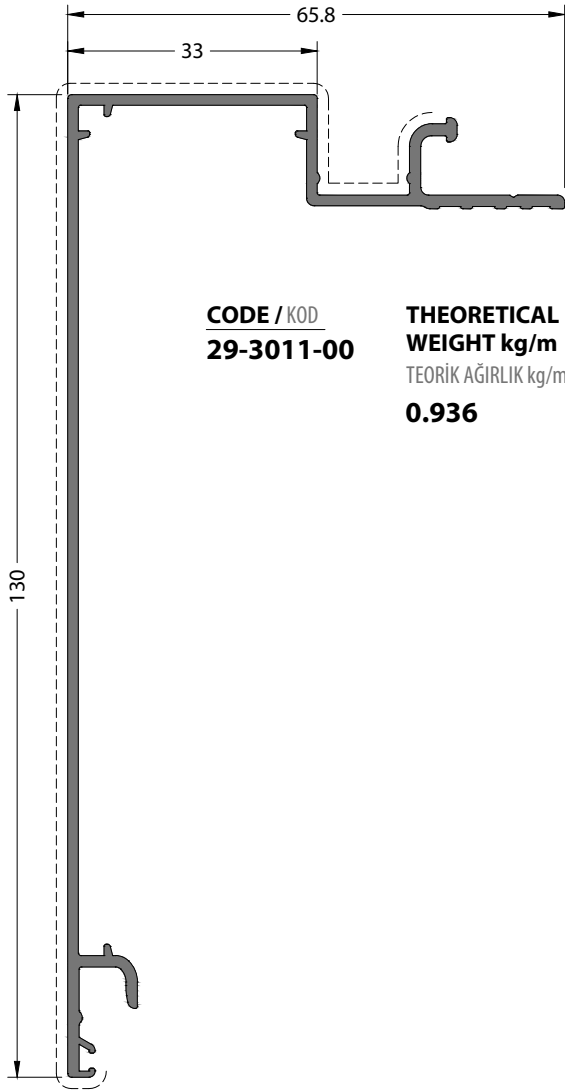
No visible surface.
Görünen yüzeyi yoktur.

CODE / KOD
16-104-020

THEORETICAL WEIGHT kg/m
TEORİK AĞIRLIK kg/m
0.528

Application Details / Uygulama Detayı

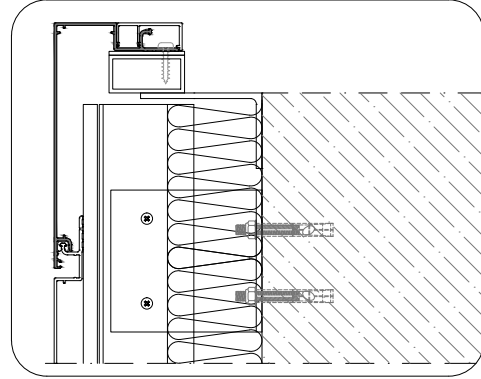




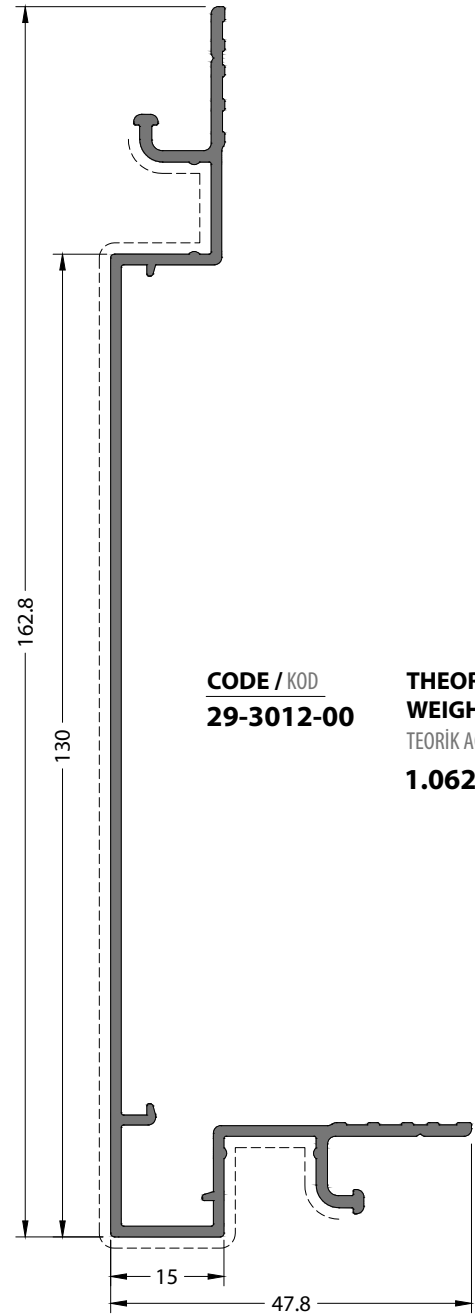
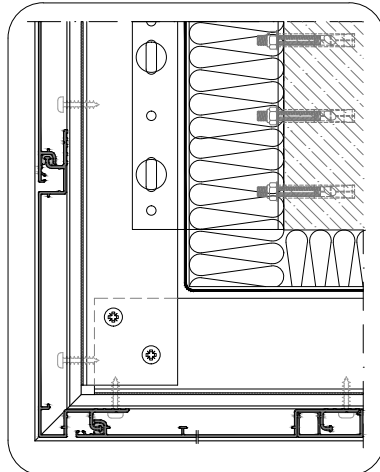
CODE / KOD
29-3011-00

THEORETICAL WEIGHT kg/m
TEORİK AĞIRLIK kg/m
0.936

Application Details / Uygulama Detayı

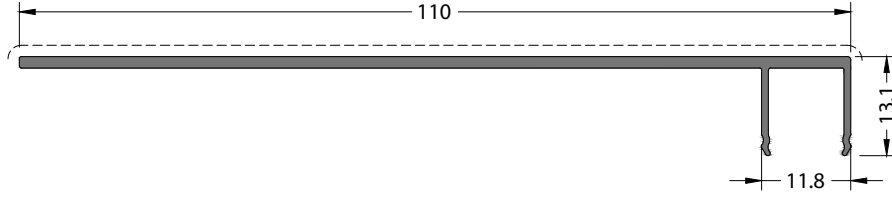


Application Details / Uygulama Detayı



CODE / KOD
29-3012-00

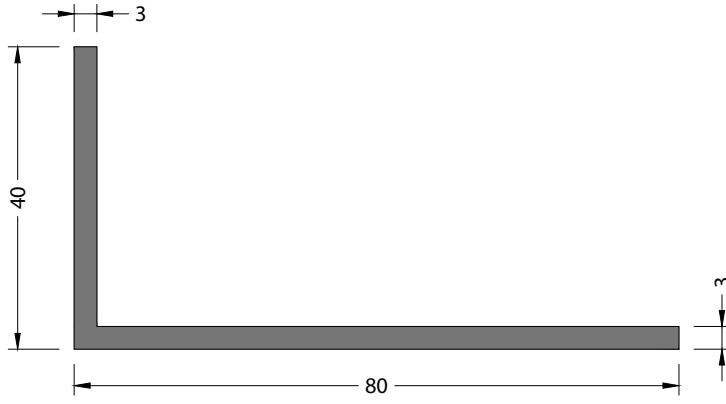
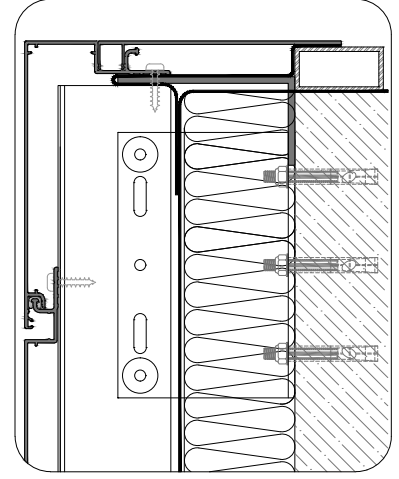
THEORETICAL WEIGHT kg/m
TEORİK AĞIRLIK kg/m
1.062



CODE / KOD
29-4002-00

THEORETICAL WEIGHT kg/m
TEORİK AĞIRLIK kg/m
0.500

Application Details / Uygulama Detayı

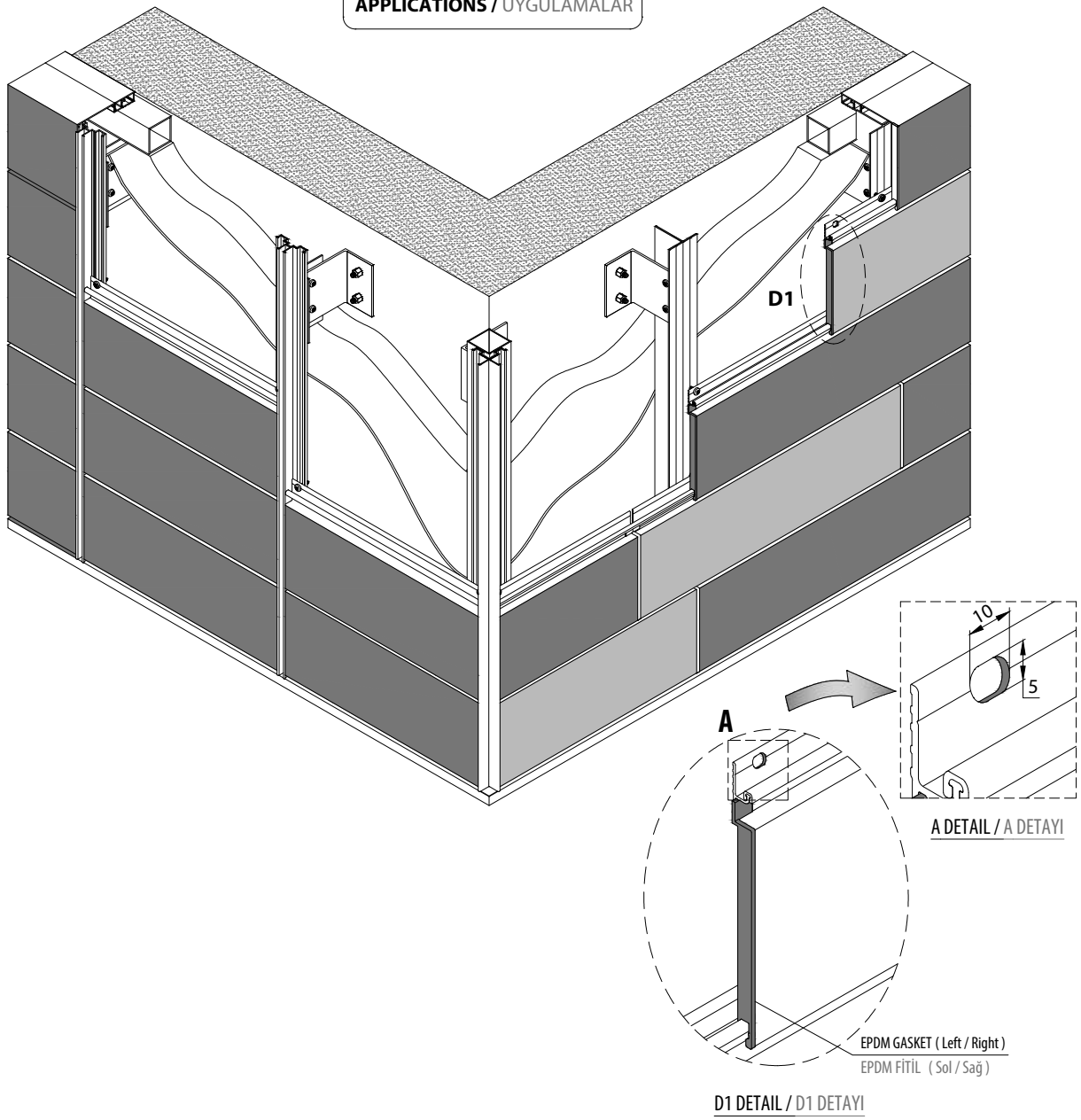


CODE / KOD
14-122-030

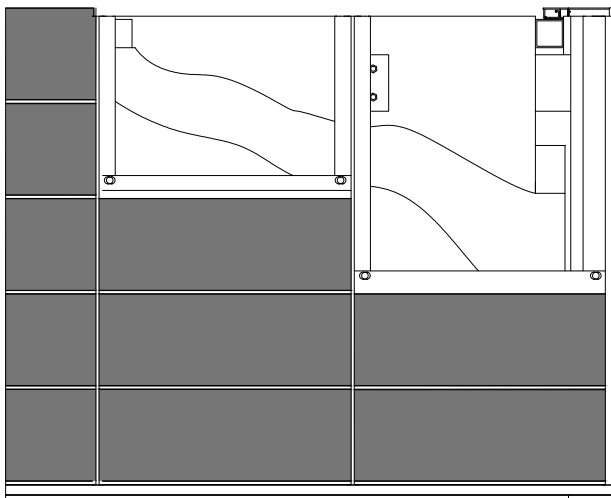
THEORETICAL WEIGHT kg/m
TEORİK AĞIRLIK kg/m
0.948

DETAILS / DETAYLAR

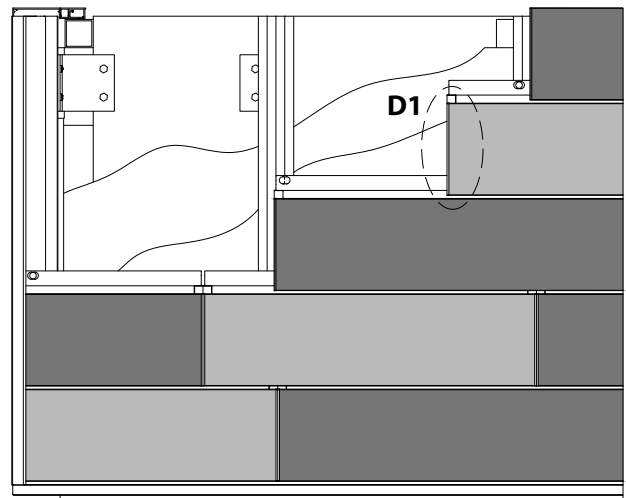
APPLICATIONS / UYGULAMALAR



STANDARD APPLICATION / STANDART UYGULAMA

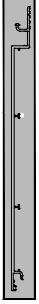


UNIQUE APPLICATION / ÖZGÜN UYGULAMA

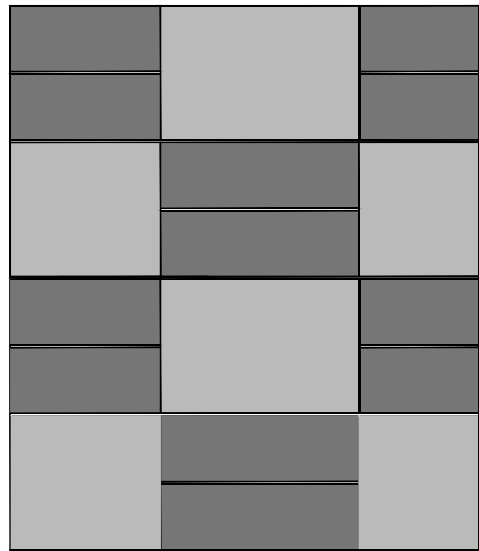
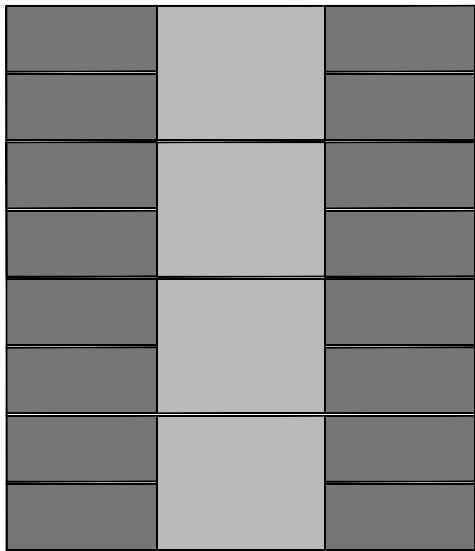
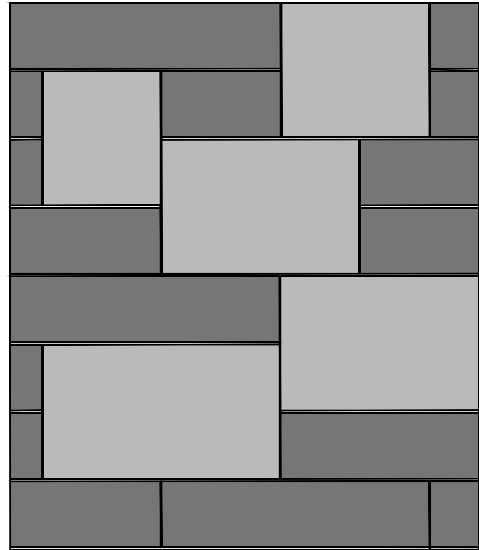
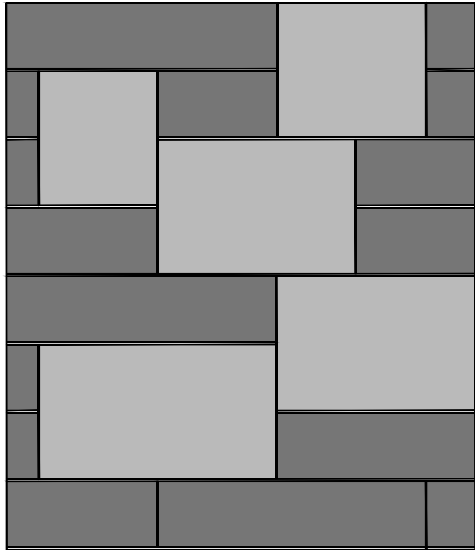
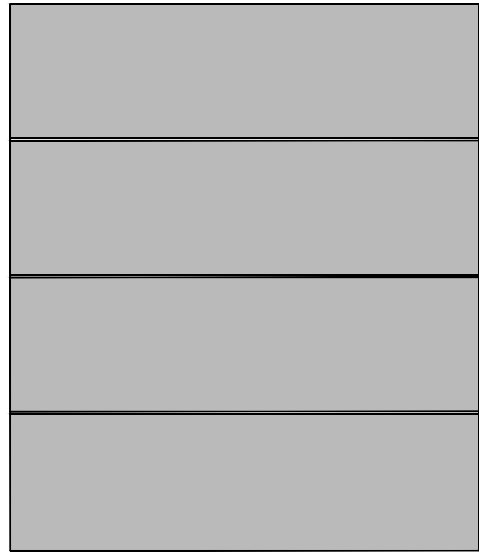
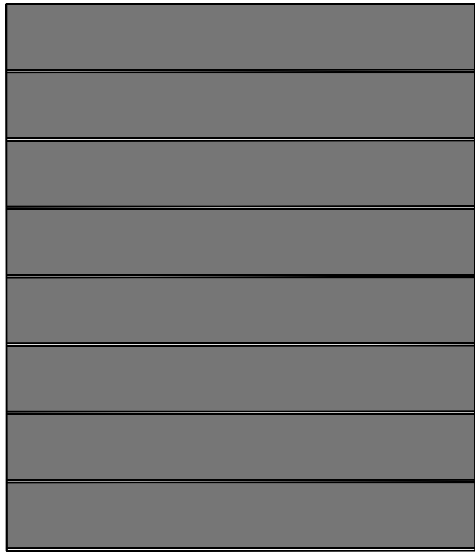




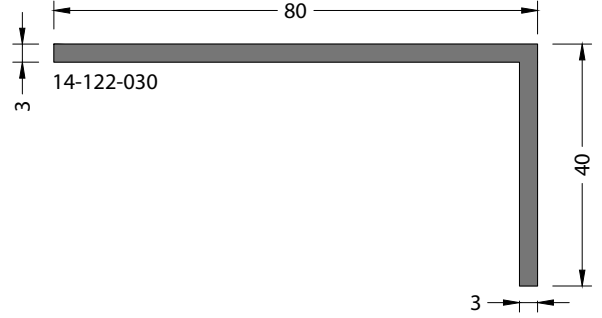
130 Lamella / Lamel



265 Lamella / Lamel

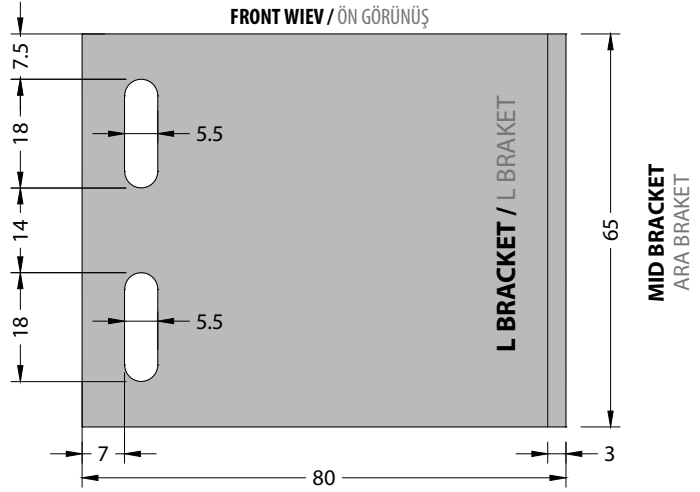
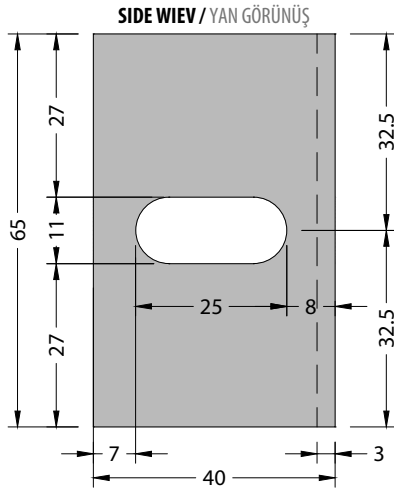


L BRACKET / L BRAKET



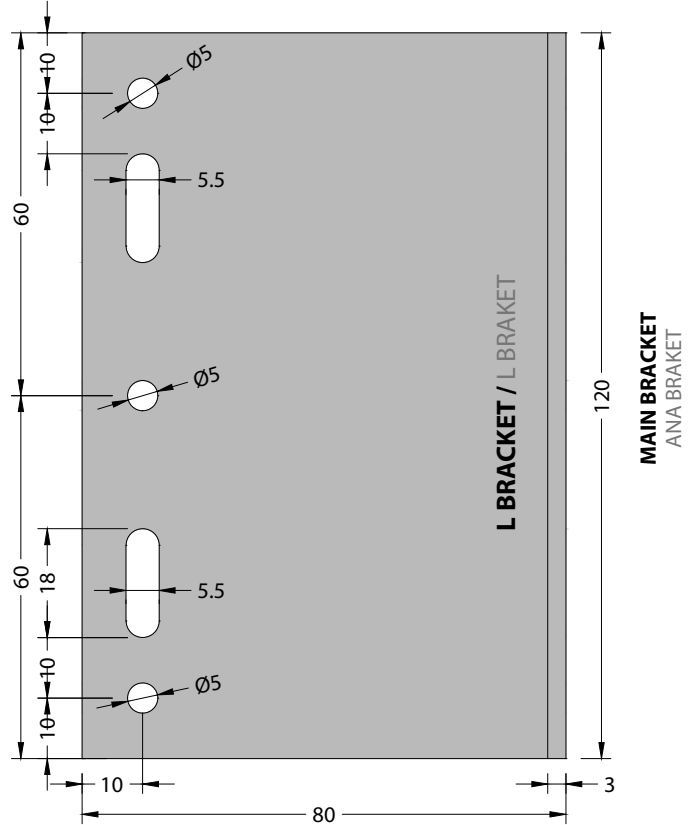
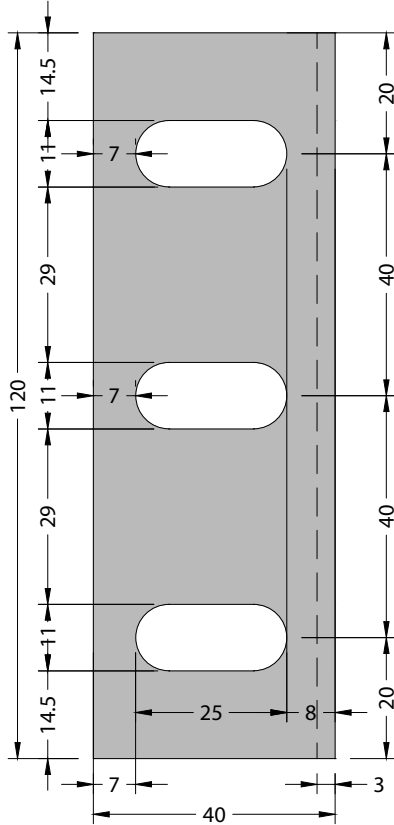
PROFILE CODE / PROFİL KODU 14-122-030

ACCESSORY CODE / AKSESUAR KODU CA14-122-65.0



PROFILE CODE / PROFİL KODU 14-122-030

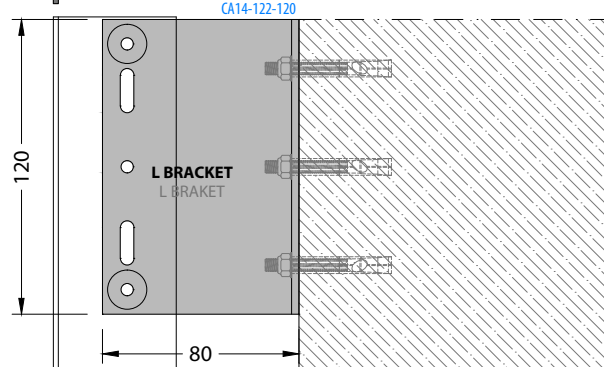
ACCESSORY CODE / AKSESUAR KODU CA14-122-120



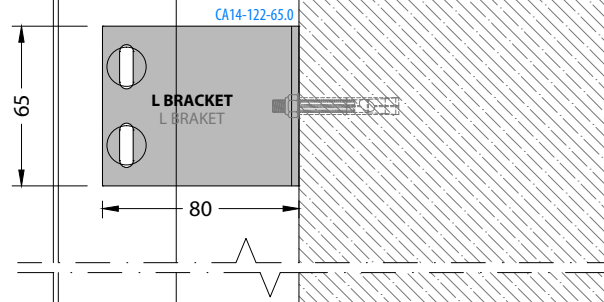
16-104-020

BRACKET ASSEMBLY / BRAKET UYGULAMASI

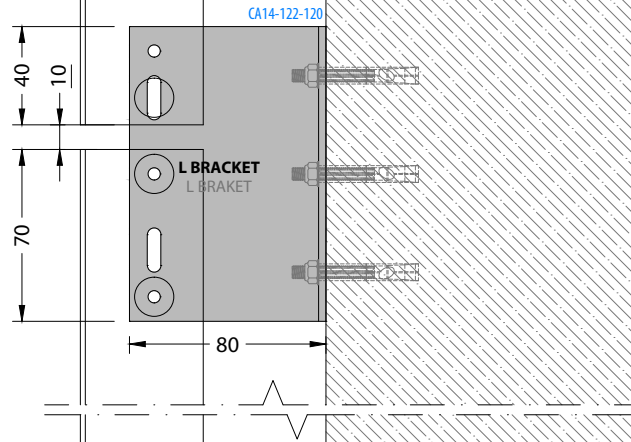
MAIN BRACKET
ANA BRAKET
UP / ÜST



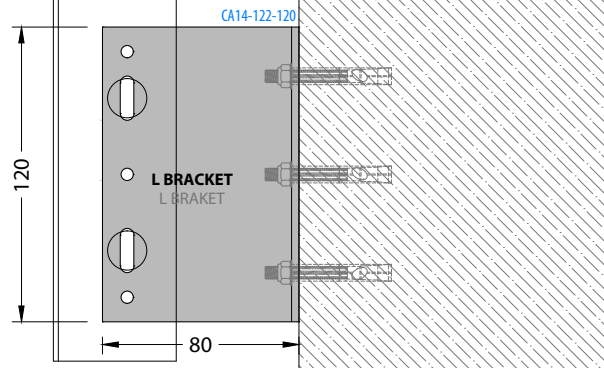
MID BRACKET
ARA BRAKET

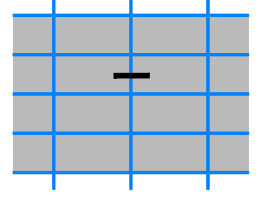


MAIN BRACKET
ANA BRAKET

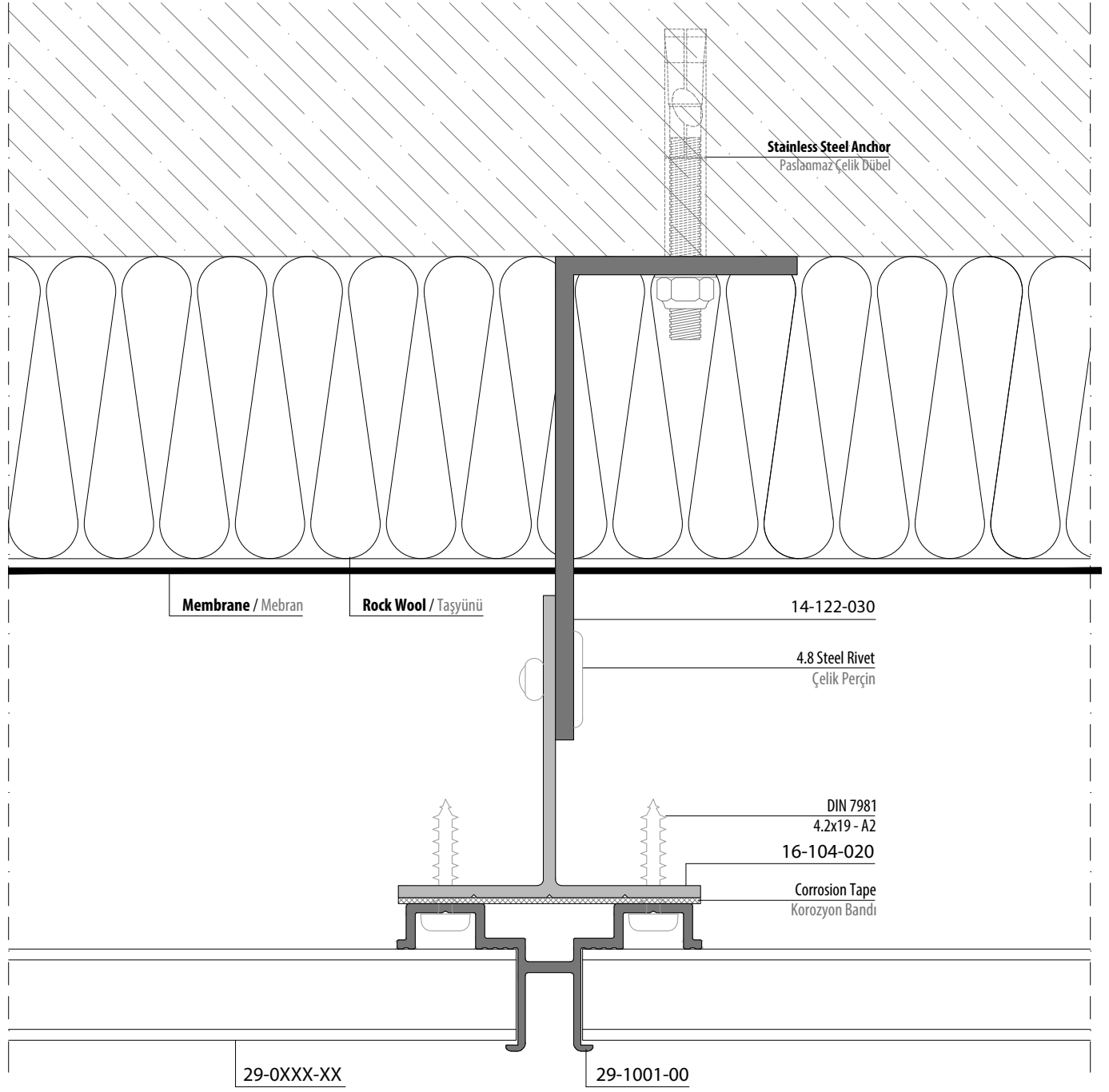


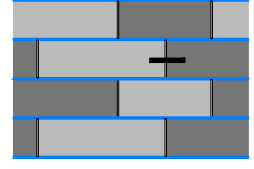
MAIN BRACKET
ANA BRAKET
BOTTOM / ALT



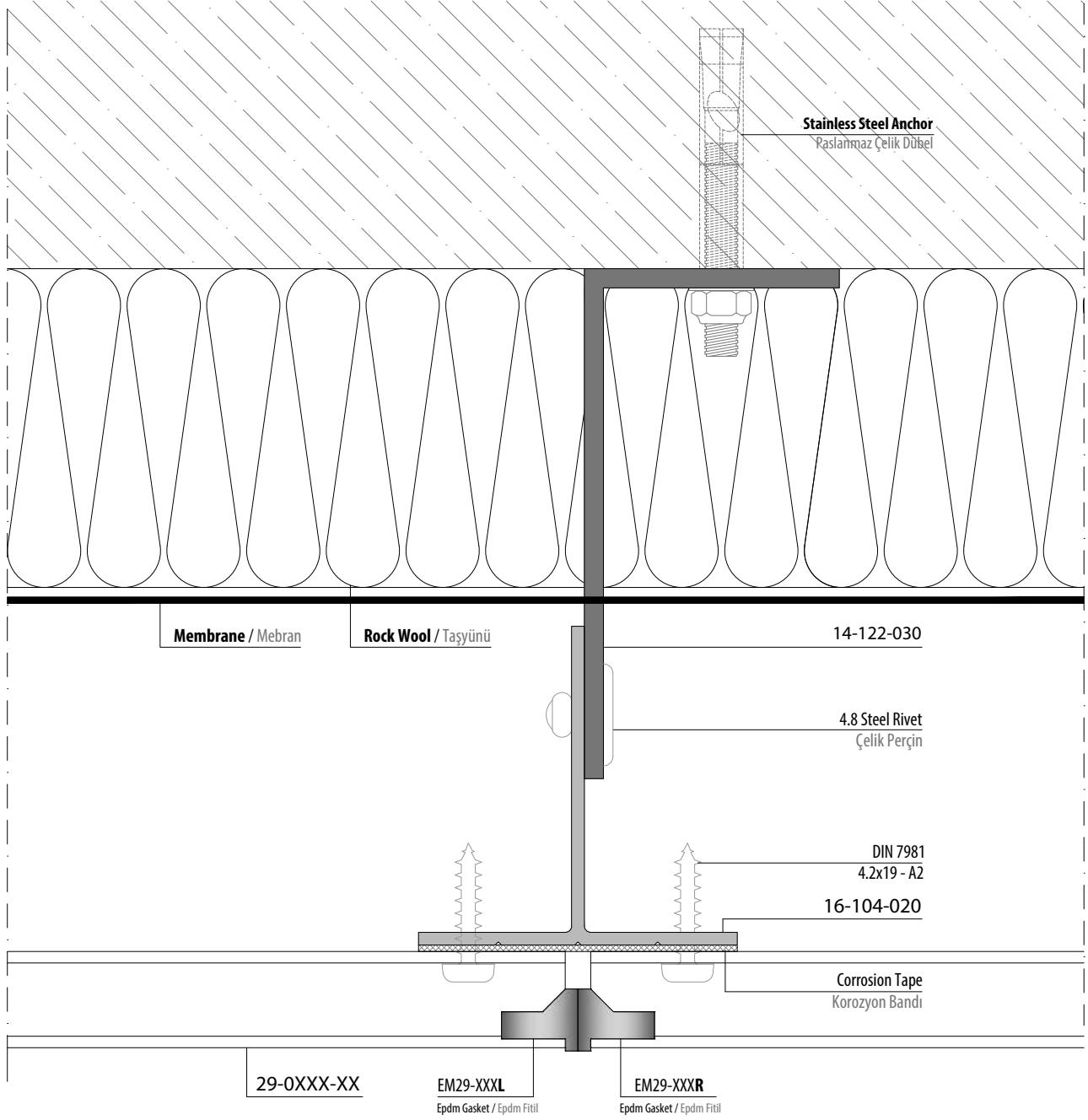


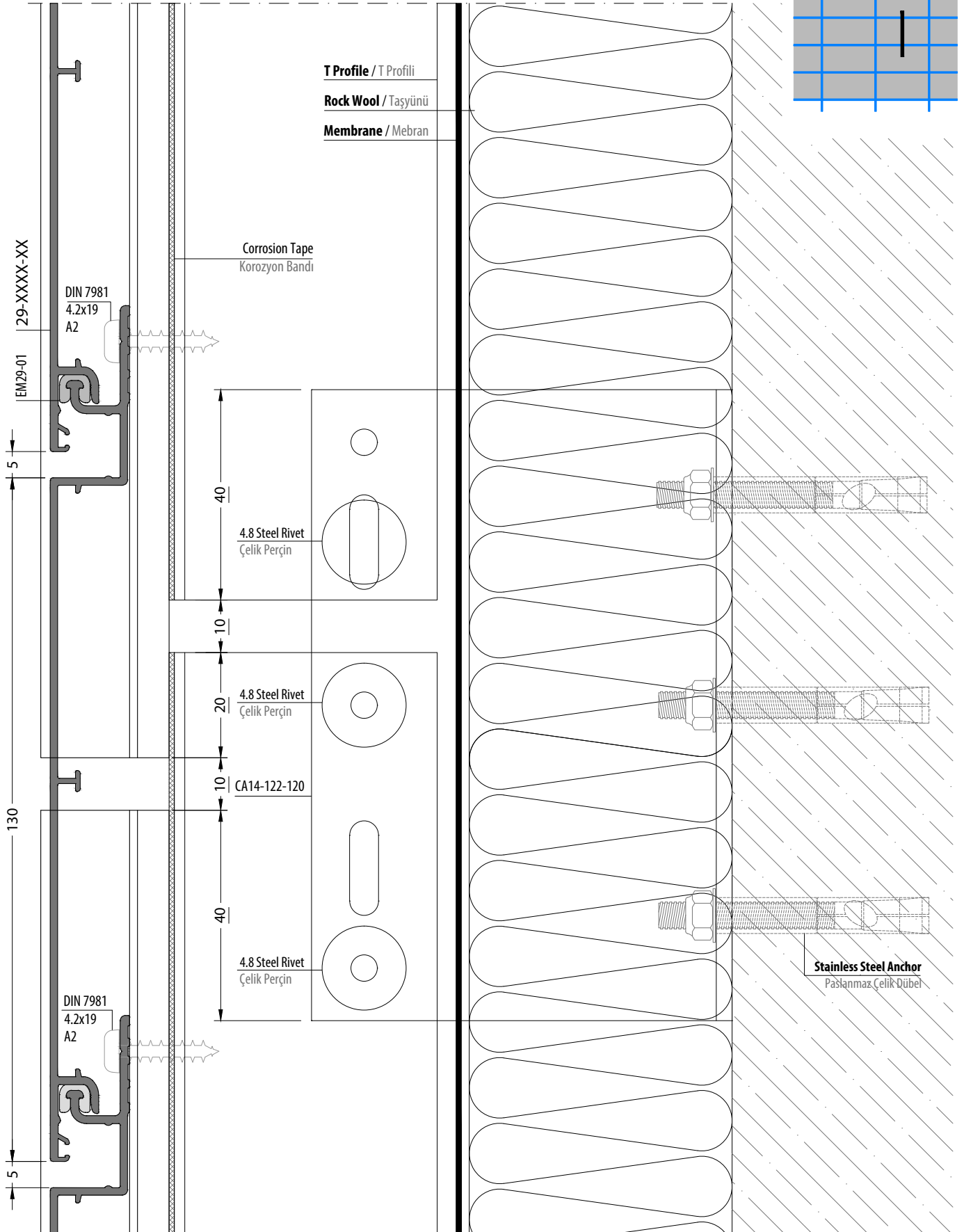
STANDARD APPLICATION / STANDART UYGULAMA

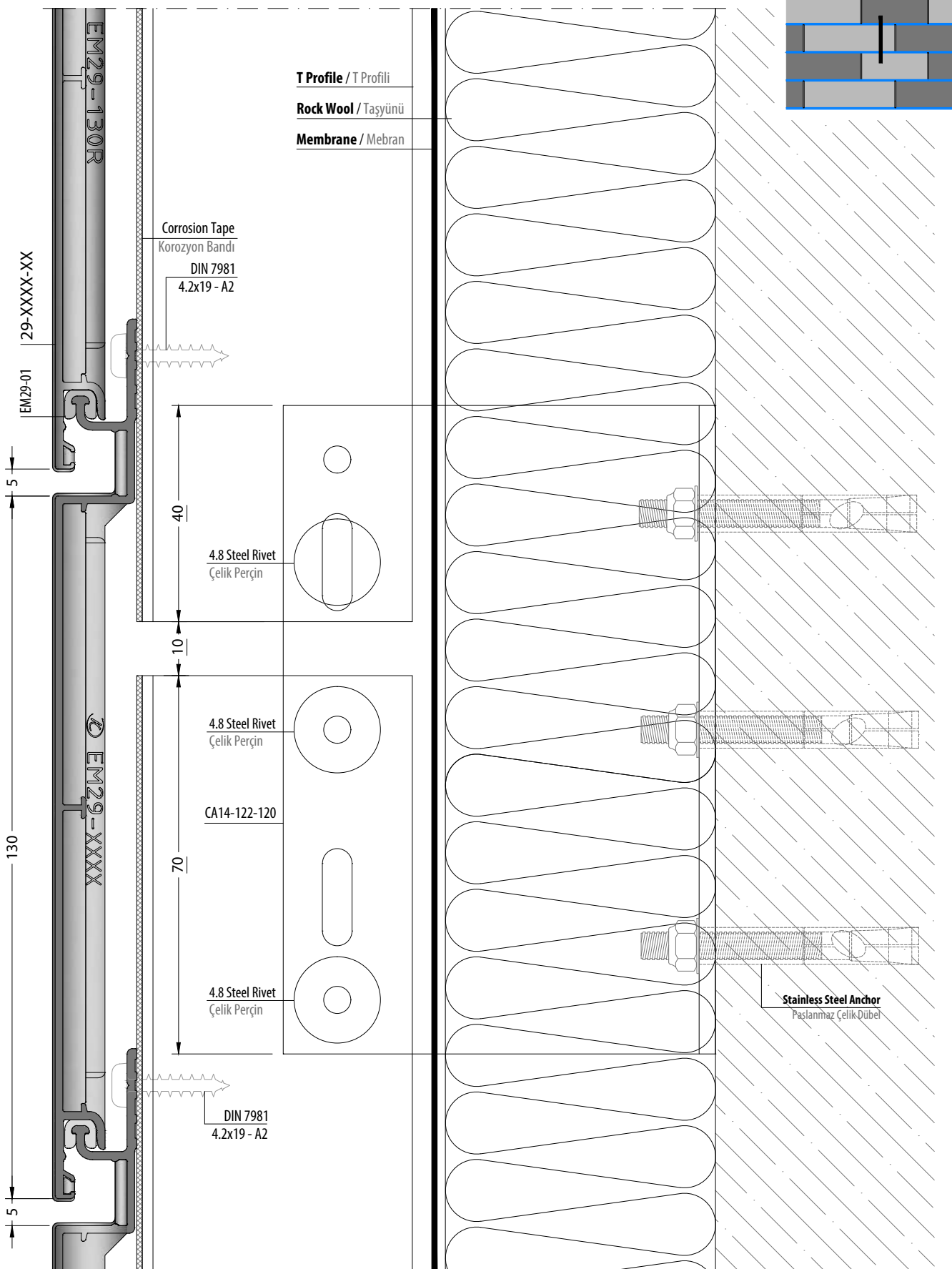




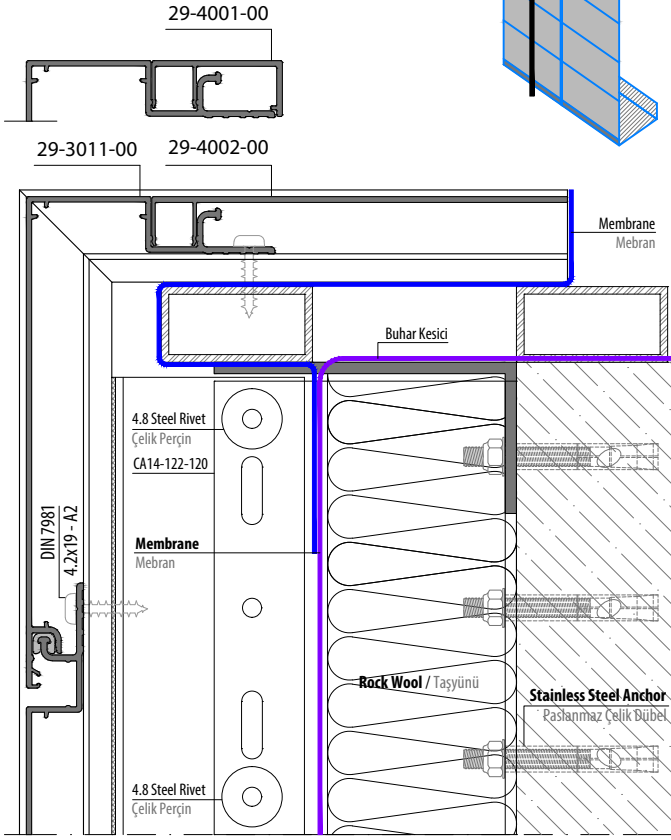
UNIQUE APPLICATION / ÖZGÜN UYGULAMA



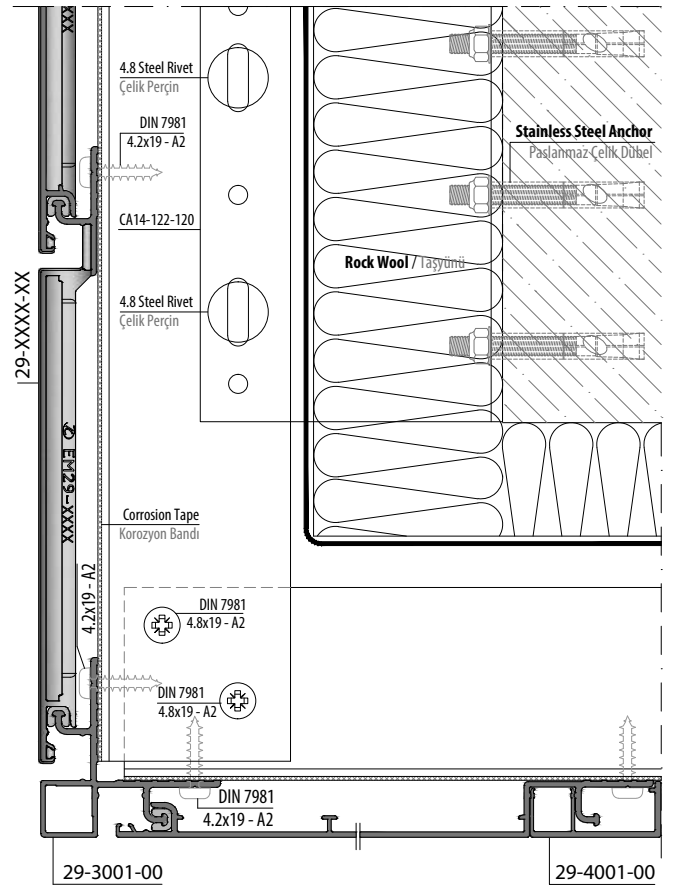
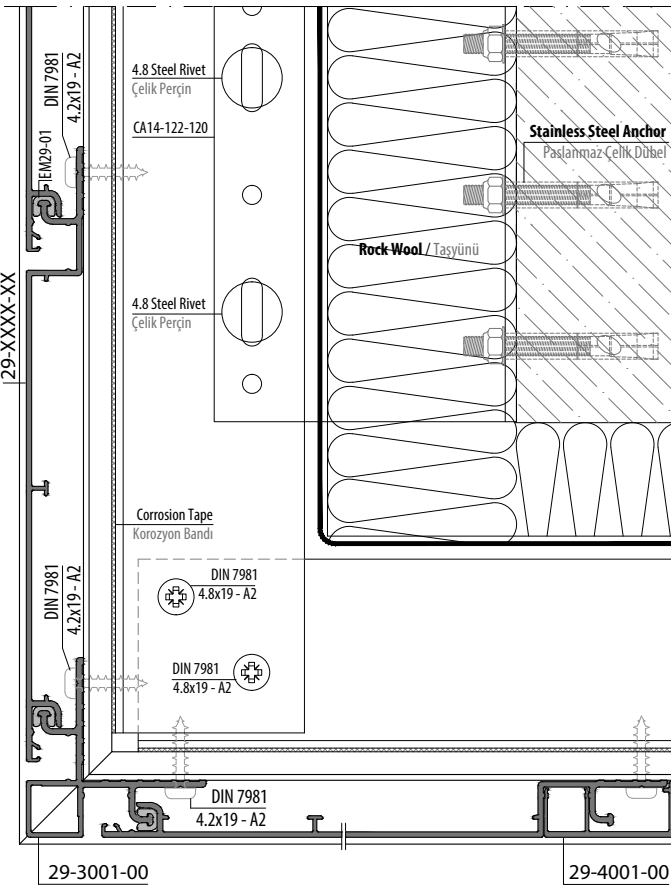
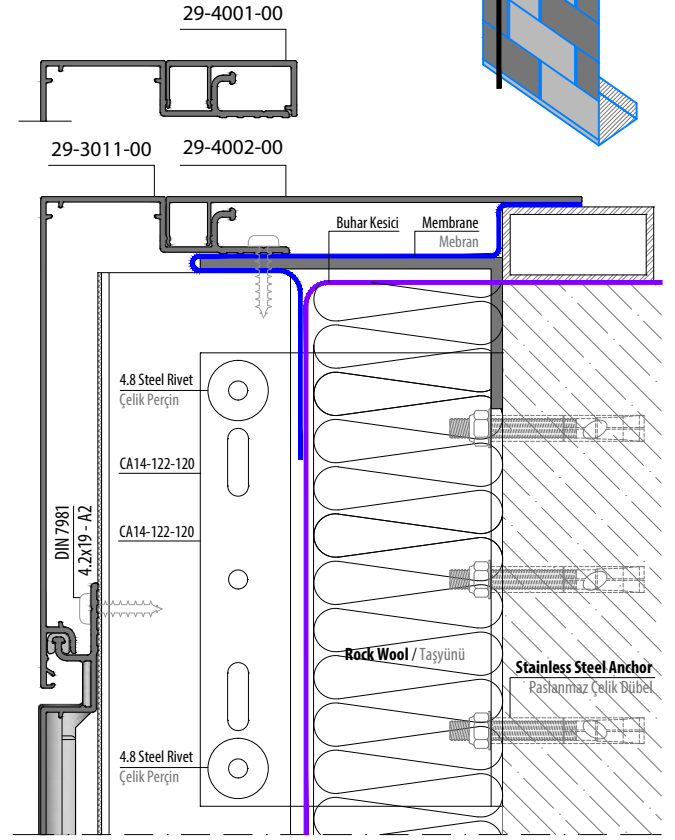




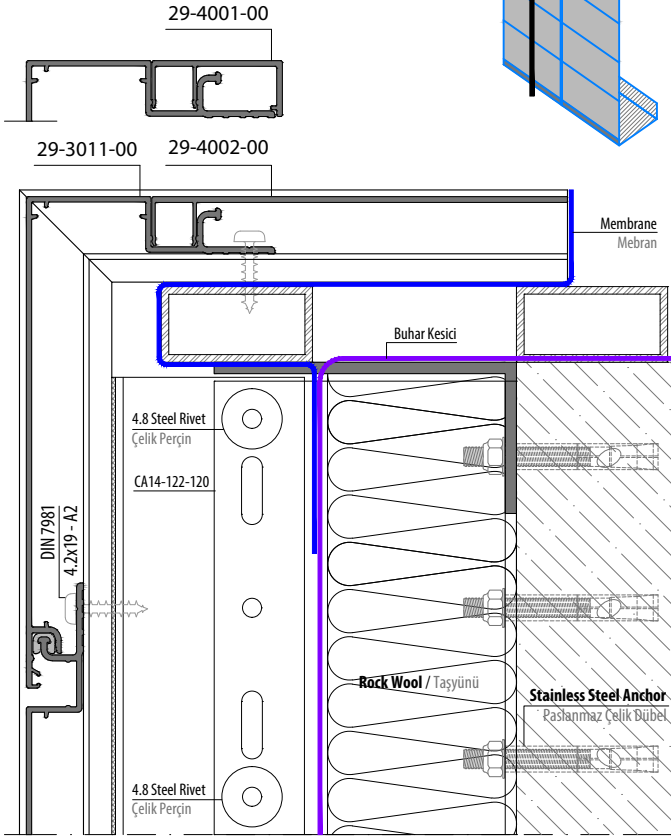
STANDARD APPLICATION
STANDART UYGULAMA



UNIQUE APPLICATION
ÖZGÜN UYGULAMA



STANDARD APPLICATION
STANDART UYGULAMA



UNIQUE APPLICATION
ÖZGÜN UYGULAMA

